

PRIMARY END TERM 3 EXAMS 2016

SCIENCE STD 7

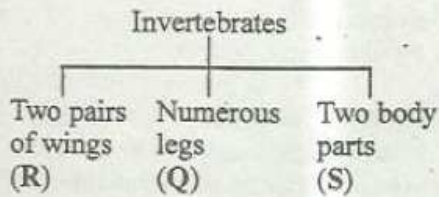
Osiligi House, Opposite KCB, Ground Floor
Off Magadi Road, Ongata Rongai | Tel: 0711 88 22 27
E-mail: infosnkenya@gmail.com | Website: www.schoolsnetkenya.com

SCIENCE

1. The following are characteristics of a certain flower:
 (i) wide petals
 (ii) heavy pollen grains
 (iii) few pollen grains

Which one of the following characteristics suits the flower described above?

- A. Has feathery pollens
 B. Anthers loosely hung outside the petals
 C. Narrow petals
 D. Coloured petals
2. Which one of the following plants is **not** an insectivorous?
 A. Fern
 B. Butterwort
 C. Venus fly trap
 D. Pitcher plant
3. Study the chart below and answer the question that follows.



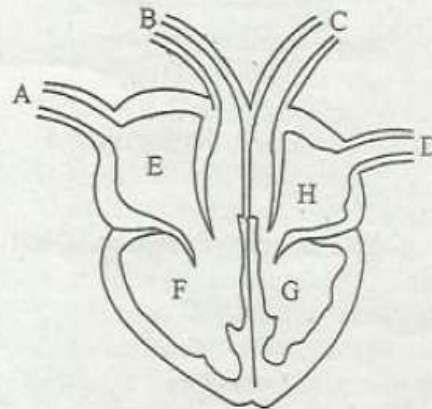
Choose the arranged classes of anthropods R, Q and S respectively.

R	Q	S
A. Insects	Crustaceans	Anthropods
B. Crustaceans	Arachnids	Insects
C. Crustaceans	Insects	Myriapods
D. Myriapods	Arachnids	Insects

4. Which one of the following happens when Tom breathes in?
 A. Lungs contract
 B. Ribs move upwards and outwards
 C. Diaphragm moves upwards
 D. Ribs move downwards and upwards
5. Drugs which prevent the occurrence of diseases are called
 A. antibiotics
 B. vaccines
 C. stimulants
 D. pain killers

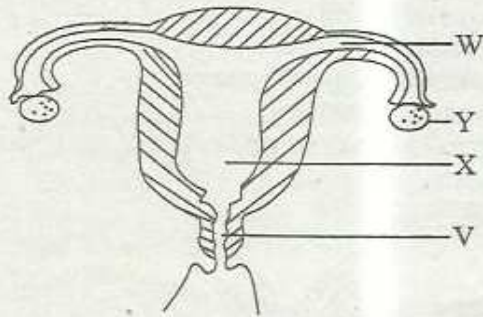
6. When building sandy soil is mixed with cement because
 A. it can drain well
 B. it has large air spaces
 C. it can mix easily with cement
 D. it has large particles

Use the mammalian heart below to answer questions 7 and 8



7. Which one of the following blood vessels marked A, B, C and D carries blood from the lungs to heart?
 A. A
 B. B
 C. C
 D. D
8. Which one of the following parts marked E, F, G, H receives oxygenated blood from the heart first?
 A. F
 B. E
 C. H
 D. G
9. Three of the following affect the rate of transpiration **except**
 A. light
 B. temperature
 C. wind
 D. atmosphere
10. A group of std 5 pupils listed the following characteristics of animals:
 (i) Breathe by means of lungs
 (ii) Lay eggs
 (iii) Scaly body
 (iv) Has internal fertilisation
- Which one of the following animals would the above characteristics fit?

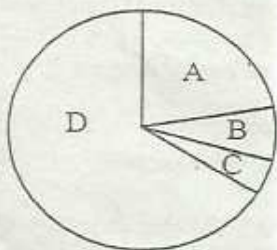
11. Decanting is a method of separating mixtures. It is commonly used to separate
- A. Immiscible liquids
B. Solids mixed with other solids
C. Insoluble substances in a solution
D. Miscible liquids
12. The diagram below is of the female reproductive system.



Fertilisation takes place in the part marked

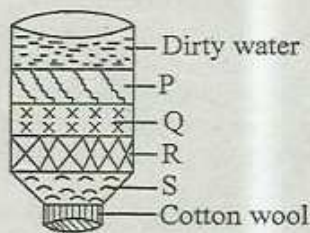
- A. V B. W
C. X D. Y
13. Which one of the following is made up of field pests only?
- A. Aphids, monkey, cutworm
B. Aphids, weevils, stalkborer
C. White ants, mite, rodents
D. Mice, aphids, weevils
14. Three of the following are all types of grazing. Which one is not?
- A. Stall feeding B. Paddockling
C. Herding D. Rotational
15. Which one of the following statements is correct about livestock parasites?
- A. They can survive without food
B. They can survive without a host
C. They cannot survive without a host
D. They help the host

Study the chart below and answer the question that follows.



16. Which one of the following is not a function of the gas labelled C?
- A. Germination
B. Making plants' food
C. Preservation of fizzy drinks
D. Fire extinguisher
17. All the following animal feeds when fed to livestock will nourish them with proteins **except**
- A. glycine B. desmodium
C. hay D. clover
18. Which one of the following is not true about canning?
- A. Cans used are normally subjected to high temperature
B. Many kinds of food can be preserved by canning
C. All air from the can must be removed before sealing
D. A little damage to the can will not affect the food
19. Which one of the following sets of food contain a balanced diet?
- A. Beans, avocado, groundnuts
B. Insects, boiled maize, kales
C. Honey, mango, sugarcane
D. Ugali, cabbages, honey
20. The following are stages of HIV infection:
- (i) Full blown
(ii) Window stage
(iii) Symptomatic
(iv) Incubation
- Which pair shows the stage between infection and when the first signs show and also the period when opportunistic infections occur respectively?
- A. (i) and (iv) B. (iv) and (iii)
C. (ii) and (i) D. (iii) and (ii)
21. The tooth that is chisel-shaped also
- A. is the first to be shed off
B. are eight in the upper jaw
C. is used for cutting
D. is sharp pointed
22. Which one of the following components of environment is the most abundant on the earth's surface?
- A. Water B. Air
C. Soil D. Plants
23. The following are changes of state of matter. Which one is not?
- A. Changing of water to ice
B. Crushing chalk to powder
C. Heating water to vapour
D. Melting candle to wax

24. The diagram below is a home-made filter.



The material represented by letter P is used for

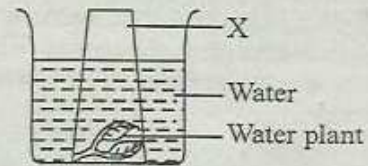
- A. preventing water from pouring
 B. absorbing brown colour
 C. killing germs in dirty water
 D. making water safe for drinking
25. Which of the following factors need **not** be kept the same when investigating water retention in different soils?
 A. Types of soil
 B. Size of funnel
 C. Time allowed for the experiment
 D. Amount of water added
26. The following are characteristics of soil erosion:
 (i) *V-shaped trenches on the ground*
 (ii) *Small and shallow channels on the ground*
 (iii) *Small holes on the ground*
 (iv) *Thin top layer missing*

Which effects are as a result of gulley and rill types of erosion respectively?

- A. (i) and (iii) B. (ii) and (iii)
 C. (iv) and (ii) D. (i) and (ii)
27. Three of the following statements are **correct** about weeds. Which one is not?
 A. Some weeds are used as food
 B. Some weeds have medicinal value
 C. All weeds increase the crop yield
 D. All weeds increase the cost of production
28. In the preparation of a compost heap, farm yard manure should be kept into the pile at a given time or stage. This is in order to
 A. add the amount of manure
 B. add the quality
 C. reduce the rate of decomposition
 D. encourage decomposition because of additional bacteria
29. The following are signs of ill health in livestock. Which one is **not**?
 A. Rough coat B. Watery eyes
 C. Loose dung D. Wet muzzle
30. Which of the following statements about expansion of matters is **true**?
 A. Solids expands less than liquids
 B. Liquids expand more than gases

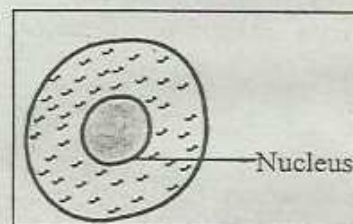
- C. Solids expand the most
 D. Gases expand less than liquids

31. The diagram below represents a set-up that was made by a class six boy.



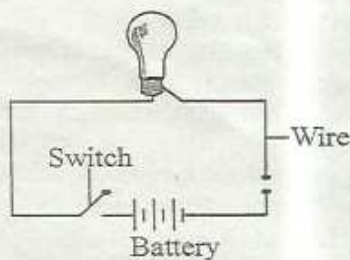
If he did the experiment during the day, which gas was most likely to be collected in the part marked X?

- A. Argon
 B. Nitrogen
 C. Carbon dioxide
 D. Oxygen
32. The urethra in human reproductive system is used for
 A. passing out of urine
 B. insertion into the vagina
 C. passage of sperms from the testicles to the vagina
 D. absorption of vaginal fluid
33. The best way of getting rid of bilharzia is by
 A. sleeping under mosquito nets
 B. covering dams with oil
 C. destroying breeding places of bilharzia worms
 D. taking curative medicine
34. Which of the following statements is **true** about all the veins?
 A. They carry blood away from the heart
 B. They all carry impure blood
 C. They have thick walls
 D. Blood in veins flow under low pressure
35. The diagram below shows a certain component of blood. What is its function?



- A. Fight germs
 B. Fuse with sperms
 C. Carry oxygen
 D. Help the blood to clot
36. Which one of the following problems is brought by taking foods like cakes, biscuits and sweets?
 A. Gingivitis B. Bad smell
 C. Plaque D. Cavities
37. Which one of the following is a social effect of abusing alcohol?

- A. Staggering
B. Addiction
C. Truancy
D. Lack of money to buy food
38. A farmer wanted to give solid medicine to his animals to control internal parasites. Which one of the following equipment would you recommend him to use?
A. Drenching gun
B. Dosing gun
C. Syringe
D. Buddizo
39. One of the following instruments is kept inside the weather house. Which one is it?
A. Anemometer B. Thermometer
C. Windvane D. Windsock
40. Which of the following is **both** a communicable and immunizable disease?
A. Malaria
B. Whooping cough
C. Tetanus
D. Tuberculosis
41. The best material that can be used to complete the circuit shown in the diagram below so that the bulb lights brightest is



- A. Brass B. Copper
C. Graphite D. Iron
42. Which of the following simple machines has the position of the load between the fulcrum and the effort?
A. Spade B. Mallet
C. Human arm D. Nut cracker
43. The leguminous plants use nitrogen in the air to make
A. carbohydrates B. proteins
C. starch D. mineral salts
44. Which one of the following is **not** an effect of water pollution?
A. Soil erosion
B. Soil acidity
C. Spread of water borne diseases
D. Corrosion of roofing iron sheets
45. The following table matches each and every organ in the elementary canal with its function **except**

Organ	Function
A. Villi	Absorption of food
B. Appendix	Storing undigested food particles
C. Colon	Absorption of water
D. Liver	producing bile juice

46. A child was taken to hospital and the doctor identified the following signs in the child:
(i) Child was weak
(ii) Bones were visible underneath the skin
(iii) The skin was pale like that of an old man
(iv) The child cried alot

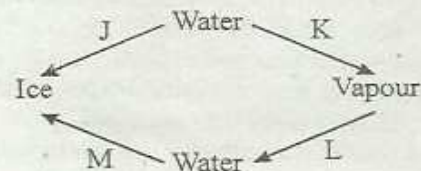
What would have been the cause of the child's problem?

- A. Lack of proteins B. Starvation
C. Lack of calcium D. Lack of iron
47. Class five pupils were asked to name green non-flowering plants. Who gave the **correct** answer?
A. Agnes - maize
B. Grey - puffballs
C. Lilian - moulds
D. Debra - moss
48. The chart food chain below shows a relationship observed in a bush by a standard seven pupil.



Which of the following animals fits at X?

- A. Spider B. Chameleon
C. Hawk D. Lizard
49. The diagram below shows processes J, K, L and M which occur in changes of state.



Four pupils were asked to name them respectively. Who gave the correct answer?

- A. John: condensation, evaporation, melting, freezing
B. Mike: condensation, melting, evaporation, freezing
C. Jude: melting, evaporation, condensation, freezing
D. Salim: evaporation, melting, condensation, freezing
50. Which of the following activities does **not** need light?
A. Guiding traffic movement
B. Taking photograph
C. Photosynthesis
D. Drying wet clothes