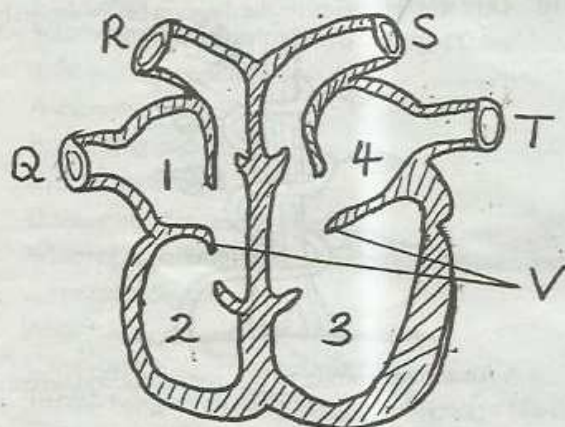

STANDARD SEVEN YEAR 2016

END-TERM 2, **SCIENCE PAPER** **1HR-40MINS**

Coordinated by KENPRO,
Macjo Arcade, 4th Floor, Suite 15E,
Off Magadi Road, Ongata Rongai |Tel: +254202319748 |
E-mail:infosnkenya@gmail.com | Website:www.schoolsnetkenya.com

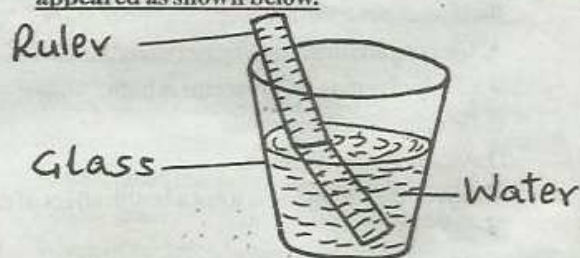
11. Which of the following is not a characteristic found on wind pollinated flowers?
- They are usually small
 - They have hairy stigma
 - They have large anthers loosely attached
 - They are usually scented
12. Three of the following are properties of crops used to prepare green manure. Which one is not?
- Quick rotting
 - Has high nitrogen content
 - Slow in growth
 - Leafy crops
13. The addictive substance in coffee is called _____?
- alcohol
 - nicotine
 - caffeine
 - cocaine
14. To which group of animals do the following characteristics refer to?
- they lay eggs
 - have constant body temperature
 - have internal fertilization
- Reptiles
 - Mammals
 - Amphibians
 - Birds
15. Which of the following gases is added as a preservative during the manufacturing of soft drinks?
- Carbon dioxide
 - Oxygen
 - Water
 - Nitrogen

Study the circulatory diagram below to answer question 16 to 19



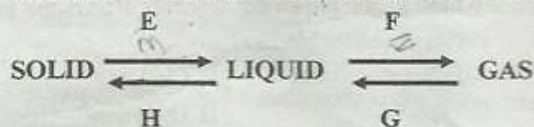
16. Name the blood vessels marked R, T respectively.
- Pulmonary vein, Aorta
 - Pulmonary vein, Pulmonary artery
 - Vena cava, Aorta
 - Pulmonary artery, Pulmonary vein

17. A person was bitten by snake which part of the heart did the poison reach first?
- 1
 - 2
 - 3
 - 4
18. What is the function of the parts marked V?
- Block the blood from flowing forward
 - Pump blood to the lungs
 - Sieve the dirt from blood
 - Prevent back flow of blood
19. Which are the main vein and artery respectively
- QT
 - RS
 - QS
 - RT
20. The following are physical changes among adolescents.
- Pimples on the face
 - Broadening of the chest
 - Growth of beard
 - Increase in height and mass
- Which changes are for both girls and boys?
- i, iv
 - ii, i
 - iii, iv
 - v, iv
21. A std. 6 pupils dipped a ruler in a glass of water and appeared as shown below.



Which process was he investigating

- reflection of light
 - refraction of water
 - reflection of water
 - refraction of light
22. The diagram below shows change of states in matter.

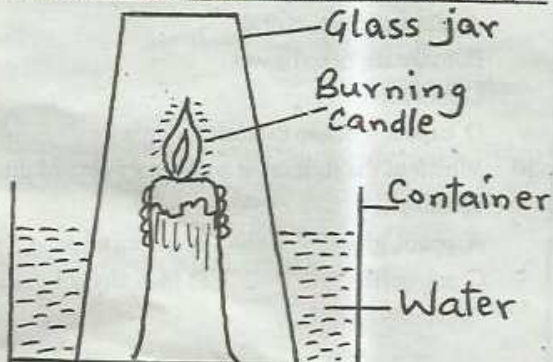


Which processes requires reduction of heat?

- EF
 - GH
 - FG
 - EH
23. The following are effects of livestock parasites except
- increased milk production
 - animal becomes anaemic
 - irritation of the skin
 - damage of wool

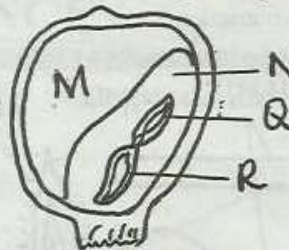
24. Which of the following is NOT a myth about HIV/AIDS?
- AIDS does not exist
 - AIDS is real
 - AIDS does not affect fat people
 - AIDS affects prostitutes only
25. Which one of the following components of blood is correctly matched with its functions?
- Red Blood cells - Clotting of blood
 - White blood cells - Transport oxygen
 - Platelets - Fight germs
 - Plasma - Transports digested food
26. Which one of the following shows the correct order of the four colours as they appear in a rainbow?
- Indigo, Blue, Green, Violet
 - Blue, Green, Violet, Indigo
 - Green, Violet, Indigo, Blue
 - Violet, Indigo, Blue, Green
27. Which following are functions of the gas which comprises 21% of the composition of air. Which one is not?
- Used in combustion
 - Used in breathing
 - Encourages rusting
 - Used in preserving food and drinks
28. The following are advantages of stall grazing. Which one is not?
- Reduces feed wastage
 - Allows easy collection of manure
 - Uses a very small area
 - Animal movement is unlimited
29. Which of the following statements is true about soil capillarity?
- Loam soil has the best capillarity
 - Capillarity depends on the size of soil particles
 - Sandy soil has the best capillarity
 - Clay soil is the poorest in capillarity

30. The experiment below was set up by a Std. 6 girl.



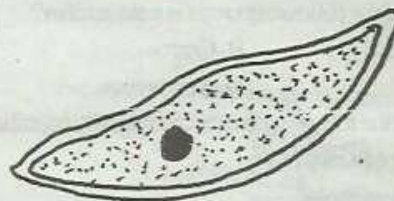
What will happen to the water in the container after the candle goes out?

- Decrease
 - Increase
 - Boil
 - Pours
31. Which parts of the seed shows the endosperm and the cotyledon respectively?



- M, N
- N, M
- Q, R
- R, Q

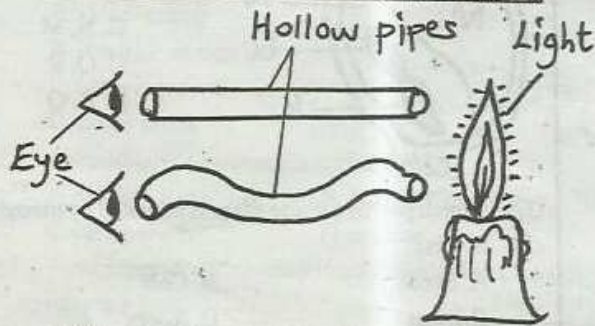
32. Which part of a maize plant is attacked by maize stalk borers?
- Seeds
 - Cob
 - Stem
 - Roots
33. Which of the following habits causes lung cancer?
- Chewing khat
 - Smoking tobacco
 - Drinking alcohol
 - Smoking bhang
34. The handle to fix in a forked jembe should be
- Rough, long and tightly fixed
 - Smooth, long and tightly fixed
 - Rough, short and tightly fixed
 - Smooth, Short and tightly fixed
35. Which part of the body can one find the internal parasite shown below?



- stomach
- ileum
- pancreas
- liver

36. What are the effects of drugs that are said to be depressants
- slows down body reactions
 - fastens body reaction
 - increases body temperature
 - makes one hyperactive
37. In the digestive system water and mineral salts are absorbed in the
- colon
 - ileum
 - duodenum
 - stomach
38. Which of the following can prevent rickets in children?
- Taking sufficient food
 - Taking food rich in iron

- C. Feeding on food rich in proteins
D. Be exposed to sunlight as much as possible
39. Why are gaps in the railway line left? So that _____
- A. the train can increase speed
B. there is room for expansion
C. the rails fits wells
D. there is room for contraction
40. Two boys did the experiment as shown below.

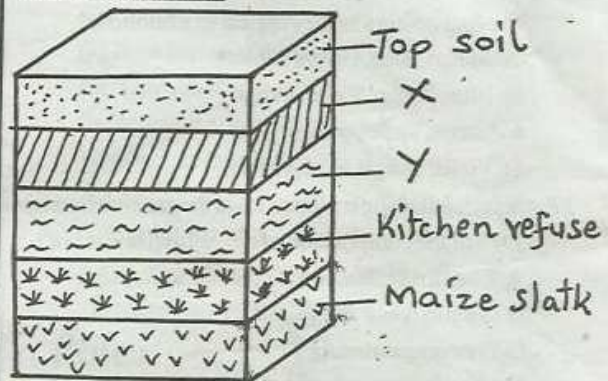


Which of the following statement is true on their findings?

- A. Light travels in a straight line
B. Pipes reflects light
C. Heat from the candle can be seen
D. Light travels around bends
41. What is the importance of mulching
- A. covering crops
B. reduces the rate of evaporation
C. makes soil lose most of its water
D. increases the rate of evaporation
42. Which one of the following crops is a stem tuber?
- A. Irish potato B. Carrot
C. Cassava D. Arrow root
43. Which one of the following factors can majority contribute to the sinking of a ship?
- A. carry many people
B. changing its shape
C. reducing the load
D. using wood instead of metal
44. Which of the following parts of the digestive system does not produce digestive juices?
- A. stomach B. mouth
C. duodenum D. ileum
45. The following are characteristics of a certain type of soil erosion
- (i) occurs on a flat bare ground
(ii) the soil is carried uniformly
- Which of the following is true about the soil erosion described above?

- A. can be controlled by planting cover crops
B. it makes small shallow channels
C. It can be prevented by mulching
D. Can be easily noted
46. Which of the following is the third stage during germination of a seed?
- A. Testa bursts open
B. The seeds absorbs water
C. The seed swells up
D. The radicle grows into a root

The diagram below shows arrangement of materials in a compost heap



47. Which of the following materials are placed at the part marked x and y respectively?
- A. Ash, green manure B. Grass, yard manure
C. Ash, grass D. Ash, yard manure
48. Which of the following is the reason why top soil is added to the heap?
- A. To conserve soil moisture
B. Prevent weeds from growing
C. Introduce bacteria to the compost to encourage decomposition
D. To prevent splash erosion
49. The heap is turned occasionally at least after every three to four weeks. This is to _____
- A. allow circulation of air
B. make the heap be wet
C. moisten the heap
D. expose the heap to direct sunlight
50. Which of the following commonly abused drugs are inhalants
- A. petrol, glue B. miraa, tobacco
C. tea, coffee D. glue, alcohol