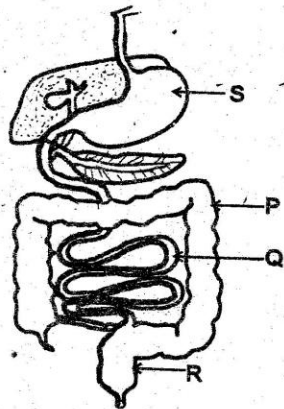


1. A certain type of teeth have two roots, cups and ridges. The teeth are **likely** to be used for:-
 - A. Cutting
 - B. Chewing
 - C. Biting
 - D. Tearing

2. The diagram below shows parts of the human digestive system.



Which statement is **true** about the above labelled parts?

- A. S - Mixes food with digestive enzymes
 - B. Q - Absorption of water
 - C. P - Absorption of digested foods
 - D. R - Digestion of food ends
3. During breathing, the nose has all the following functions **except** one. Which one?
 - A. It warms the air
 - B. It moistens the air
 - C. It cleans the air
 - D. It absorbs the air into the body
 4. When the heart of a mammal contracts blood in the left ventricle is forced out:-
 - A. Through the pulmonary vein
 - B. Through the aorta
 - C. Through the pulmonary artery
 - D. Into the left auricle

5. The component of the environment that is found in all environments is:-

- A. Water
- B. Soil
- C. Air
- D. Plants

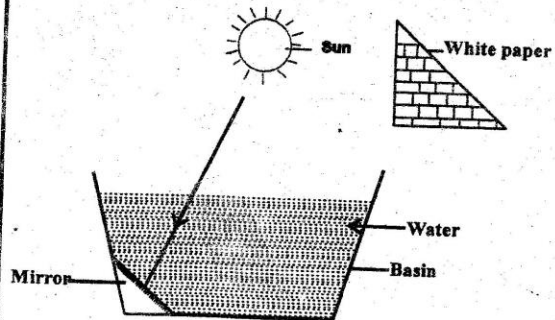
6. Birds use their flat tails for:-

- A. Braking and turning
- B. Balancing and protection
- C. Flying and braking
- D. Balancing and reducing friction

7. When livestock are fed on lucerne, they get nourished with:-

- A. Minerals
- B. Proteins
- C. Vitamins
- D. Energy

8. In an experiment, pupils placed a mirror in a basin containing water to direct light to a white wall as shown below.



The pupils were investigating:-

- A. How light travels
- B. Reflection of light
- C. Formation of shadows
- D. Making a rainbow

9. The following are methods of food preservation. Which method is **not** a modern method?

- A. Canning
- B. Drying
- C. Use of honey
- D. Refrigeration

10. Which one of the following plants is a cash crop?

- A. Wheat
- B. Sunflower
- C. Pineapple
- D. Irish potato

11. The **best** way of softening temporary hardness in water is by:-

- A. Boiling
- B. Adding chemicals
- C. Adding soap
- D. Adding salt

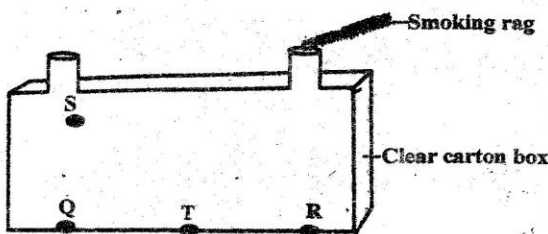
12. Which planet takes the shortest route to go round the sun?

- A. Venus
- B. Mercury
- C. Neptune
- D. Earth

13. Which one of the following plants stores food in the stem?

- A. Carrot
- B. Irish potato
- C. Onion
- D. Sweet potato

14. The set - up below was used by std 5 pupils to investigate how heat travels in matter.



For the above experiment to work effectively, candle was to be placed at:-

- A. T
- B. Q
- C. R
- D. S

15. In which one of the following activities is the tool properly used?

- A. Splitting firewood using a knife
- B. Cutting wire using a jembe
- C. Using a saw to cut wood
- D. Breaking stones using a claw hammer

16. Wax floats on water **mainly** because of:-

- A. Type of material
- B. Shape of material
- C. Size of material
- D. Mass of material

17. The function of plasma is to:-

- A. Combine with oxygen
- B. Transport digested food materials
- C. Fight disease causing germs
- D. Help in blood clotting after an injury

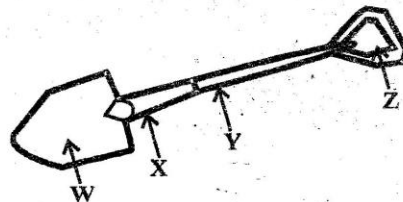
18. After using a magnet, the next stage of separating a mixture of salt, sand and iron fillings is to:-

- A. Sieve
- B. Decant
- C. Filter
- D. Add water to the mixture

19. Which one of the following is a non- green plant?

- A. Algae
- B. Fern
- C. Puffball
- D. Moss

20. The diagram below shows a lever that is used to make work easier.



The least effort can be applied if force is placed at the place marked:-

- A. W
- B. X
- C. Y
- D. Z

21. The following signs and symptoms were observed on a patient.

- (i) Severe headache
- (ii) Fever
- (iii) Abdominal pains
- (iv) Sores in the mouth
- (v) Slight diarrhoea with blood stains

The patient is likely to be suffering from:-

- A. Malaria
- B. Typhoid
- C. Cholera
- D. Bilharzia

22. The following pairs consist of parasites. Which one consists of external parasites only?

- A. Tapeworm and liver fluke
- B. Roundworm and flea
- C. Flea and tsetse fly
- D. Tsetse fly and tapeworm

23. The type of soil erosion that makes deep U or V shaped valleys on the ground is called:-

- A. Splash erosion
- B. Sheet erosion
- C. Gully erosion
- D. Rill erosion

24. Which one of the following deficiency diseases makes the face and limbs of a child to swell?

- A. Anaemia
- B. Marasmus
- C. Rickets
- D. Kwashiorkor

25. Which one of the following is not an importance of lighting a house properly?

- A. See clearly
- B. Keep off pests
- C. Read comfortably
- D. Keep the house warm

26. Which group of materials below consists of only those that can be attracted by a magnet?

- A. Aluminium, steel, cobalt
- B. Iron, steel, tin
- C. Tin, iron, copper
- D. Alnico, silver, steel.

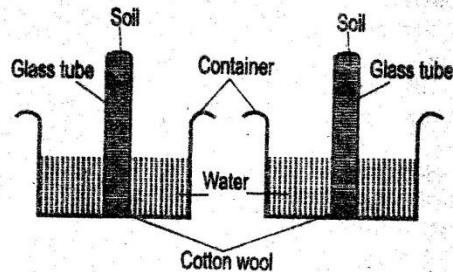
27. A certain cloud was observed with the following characteristics:-

- (i) Appeared high in the sky
- (ii) Looked like bundles of cotton wool
- (iii) Were white in colour
- (iv) Had a flat bottom

The clouds were likely to be:-

- A. Nimbus
- B. Cumulus
- C. Cirrus
- D. Stratus

28. The set - ups below were used to investigate capillarity in different types of soils.



Which of the following need not be the same when setting the above?

- A. Amount of the soil
- B. Size of glass tubes
- C. Amount of cotton wool
- D. Size of containers

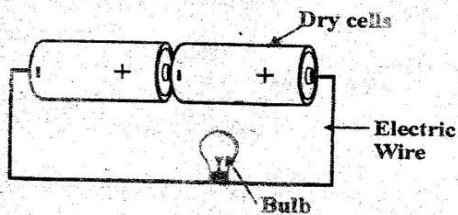
29. Fertilization in human beings takes place when:-

- A. Ovum is released from the ovary
- B. Uterus wall breaks and menstruation occurs
- C. Sperm fuses with the ovum
- D. Copulation takes place between a male and a female

30. A lactating mother should feed on diet rich in calcium and phosphorous in order to:-

- A. Enable her to gain strength
- B. Strengthen the bones of the baby
- C. Replace blood lost during birth
- D. Improve the immunity of the baby

31. The diagram below shows a set - up on transformation of energy.



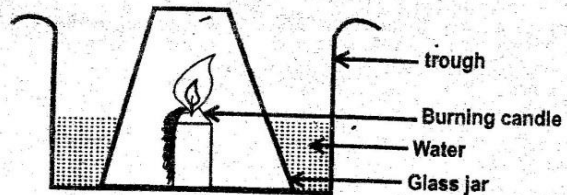
The energy transformation involved until the bulb lights is:-

- A. Electrical → chemical → electrical → light
 B. Chemical → electrical → light → heat
 C. Mechanical → electrical → heat → light
 D. Chemical → electrical → heat → light
32. In which one of the following ways is water used sparingly by?
 A. Treating sewage
 B. Using domestic water to clean toilets
 C. Turning off taps when not in use
 D. Harvesting rain water from the roofs
33. Newton is unit for measuring:-
 A. Weight
 B. Mass
 C. Pressure
 D. Volume
34. Driving motor vehicle with well maintained engines will mainly control pollution in:-
 A. Water only
 B. Soil and air
 C. Air only
 D. Air and water
35. Which body waste is excreted by all the excretory organs?
 A. Salts
 B. Carbon dioxide
 C. Excess water
 D. Urea

36. Three of the following are social effects of abusing drugs except:-
 A. Truancy
 B. Rape
 C. Induced accidents
 D. Addiction

37. When preparing compost manure, top soil is added to the heap in order to:-
 A. Provide nutrients to the bacterias
 B. Introduce bacteria to the compost
 C. Supply additional nutrients to the heap
 D. Speed up the decomposition process

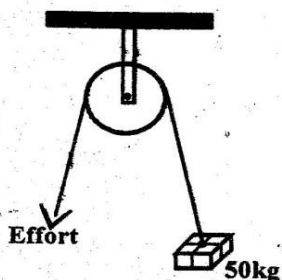
38. Pupils set up an experiment as shown in the diagram below.



What were the pupils investigating?

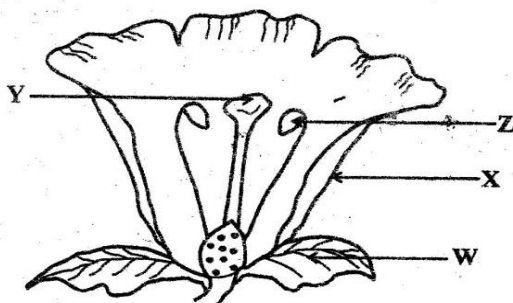
- A. Matter occupies space
 B. Not all air is used in burning
 C. Oxygen supports burning
 D. Candle does not burn when covered
39. Friction can be reduced by doing all the following except:-
 A. Streamlining bodies
 B. Polishing surfaces
 C. Using rollers
 D. Spreading murrum on roads
40. The third DPT vaccine is given to an infant at the age of:-
 A. 10 weeks
 B. 14 weeks
 C. 9 months
 D. 6 weeks
41. The following can produce electricity except:-
 A. Bicycle dynamo
 B. Torch battery
 C. Solar panel
 D. A dam

42. The diagram below shows a single fixed pulley in use.



Which statement below is **not true** about the above machine?

- A. It makes work easier by changing the direction of force
 B. It reduces the effort applied
 C. The effort applied is equal to the load lifted
 D. The effort and the load move the same distance.
43. Which one of the following is a **correct** food chain?
- A. Grass → rabbit → eagle → leopard
 B. Maize → grasshopper → snake → lizard
 C. Grass → grasshopper → snake → lizard
 D. Kale → aphids → weaver bird → rabbit
44. The diagram below shows parts of a flower



The function of the part labelled W is to:-

- A. Produce sex cells
 B. Protect the flower in the bud stage
 C. Attract insects
 D. Produce nectar

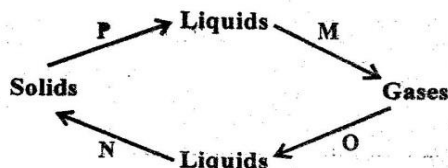
45. The **most** effective preventive measure against the spread of sexually transmitted infections among the youth in school is:-

- A. Seeking medical attention
 B. Abstinence
 C. Use of condoms
 D. Circumcision

46. The following are characteristics of plants that grow in dry areas **except**:-

- A. Fleshy stems
 B. Sharp spines
 C. Shiny or silvery hairs
 D. Broad leaves

47. The diagram below shows the change of states of matter.



The processes marked M and N respectively are:-

- A. Condensation and melting
 B. Evaporation and freezing
 C. Freezing and evaporation
 D. Melting and freezing
48. Which two liquids below when put together will mix completely?
- A. Diesel and milk
 B. Ink and petrol
 C. Fresh milk and water
 D. Cooking oil and water
49. The following are all conditions necessary for germination of a seed **except**:-
- A. Oxygen
 B. Warmth
 C. Moisture
 D. Soil

50. The part of air that is used in putting out fire occupies a percentage of air that is:-

- A. 21% B. 78%
 C. 0.03% D. 0.97%