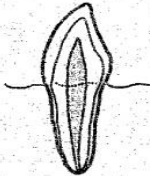
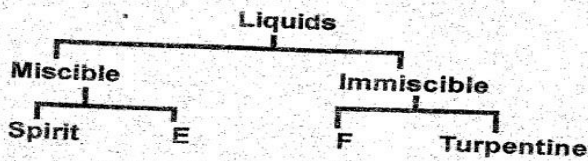


- Which one of the following sources of electricity is the odd one out?
 - Petrol driven generator
 - Wind driven turbine
 - Bicycle dynamo
 - Solar panel

- Which statement is **correct** about the type of tooth represented by the diagram below?



- They are used for tearing and holding
 - It has flat sharp edges
 - It has cusps and ridges
 - It is not part of deciduous teeth
- The chart below represents a simple classification of liquids.



Which liquids are represented by E and F respectively?

- Kerosene, water
 - Fresh milk, engine oil
 - Water, milk
 - Petrol, diesel
- Which of the following effects of drug abuse is **correctly** matched with its cause:-

Effects

- Drowsiness
- Cirrhosis
- Addiction
- Lung cancer

Causes

- Injecting of cocaine
- Smoking of cigarettes
- Chewing of miraa
- Inhaling of cobbler's glue

- Which plant below is **not correctly** matched to the parts that are eaten?

Plant

- Pumpkin
- Irish potato
- Onions
- Sorghum

The part eaten

- Fruits and leaves
- Roots
- Leaves
- Seeds

- The following are signs and symptoms of certain sexually transmitted infections
 - Causes madness if not treated
 - Causes infertility in women
 - Affects lymph glands
 - Pain when passing out urine
 - Painless sores with rashes on genitals
 - Formation of bubo
 Which two signs are for syphilis and chancroid respectively?

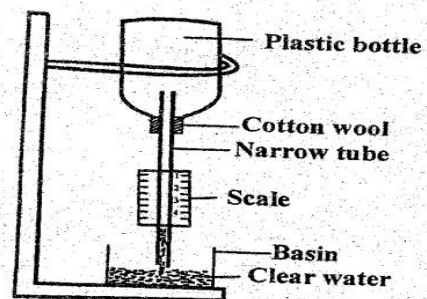
- i, ii
- vi, iv
- iii, v
- v, vi

- Which of the following is a common characteristics in a dove and a bat?
 - Body covered with scales
 - They lay eggs
 - They both have beaks
 - They have constant body temperature

- A std 7 pupil in Bondeni Primary school visited a nearby farm and observed a farmer applying mulches to crops. Which of the following is the **main** reason for mulching?
 - Conserve soil moisture
 - Prevent soil erosion
 - Improve soil fertility
 - Reduce water pollution

- The following are sources of food in the human diet **except**:-
 - Kales
 - Brown bread
 - Sugarcane
 - Mango

- The diagram below represents an improvised weather instrument constructed by a pupil.



The weather instrument did **not** function. Which one is **not** a mistake **likely** to have been made?

- Using wrong scale
- Using a narrow tube
- Using clear water
- Using cotton wool to seal

11. The following are steps followed when modelling the solar system but **not** in their correct order

- (i) Draw circles to show orbits
- (ii) Paste manilla paper on soft board
- (iii) Modelling the planets and the sun
- (iv) Putting name tags
- (v) Mounting the models of planets on orbits

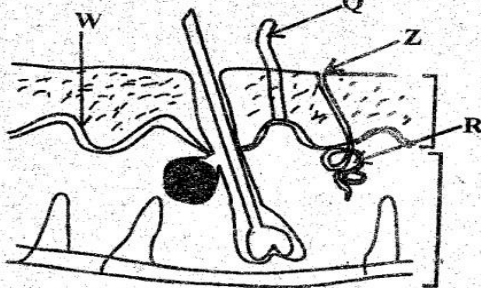
Which of the following materials shows the **correct** order when modelling the solar system?

- | | |
|---|---|
| <p>A</p> <p>Papier mache
Soft board
Pencils
Barbed wire
Glue</p> | <p>B</p> <p>Soft board
Pencils
Glue
Barbed wire
Papier mache</p> |
| <p>C</p> <p>Pencil
Soft board
Glue
Barbed wire
Papier mache</p> | <p>D.</p> <p>Papier mache
Pencil
Barbed wire
Soft board
Glue</p> |

12. Which of the following animals moves by crawling?

- A. Spider
- B. Caterpillar
- C. Grasshopper
- D. Snail

13. The diagram below shows the mammalian skin.



Which of the following is the **main** function of the part labelled R?

- A. Produce and stores fats
- B. Helps in the synthesis of vitamin D
- C. Produces, stores and distastes sweat to all parts of the body
- D. Produces and stores sweat

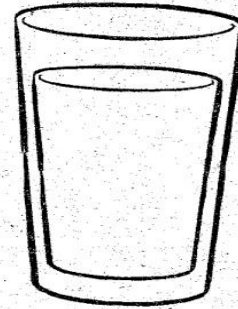
14. Which of the following simple machines is both a first class and a second class lever when in use?

- A. Spade
- B. Claw hammer
- C. Crowbar
- D. Wheel barrow

15. In which of the following activities is friction an advantage?

- A. Sharpening edged surfaces
- B. Pushing a heavy box along the floor
- C. Swimming
- D. Flying

16. Lawi was washing drinking glasses at the sink. He placed two glasses one inside the other. They got stuck as shown in the diagram below.



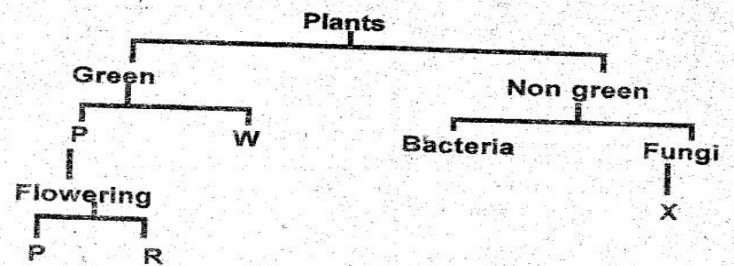
Which of the following could allow him to remove the inner glass easily?

- A. Putting cold water in the inner glass and warm water in the outer glass
- B. Place them in hot water
- C. Putting warm water in the inner glass and cold water in the outer glass
- D. Place them in cold water

17. In which of the following activities is water used only when it is required?

- A. Use of drip irrigation
- B. Mopping using laundry water
- C. Treating sewage water
- D. Mulching or shading plants

18. The chart below shows a simple classification

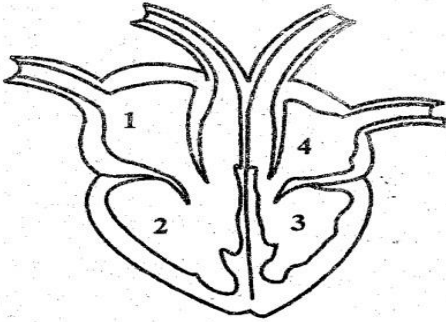


Which of the following **correctly** represent P, R, W, X ?

- A. Mushroom, groundnuts, fern, toadstool
- B. Maize, beans, algae, penicillium
- C. Mango, bracket tree, maize, beans
- D. Liverworts, bladderworts, butterworts, buttercups

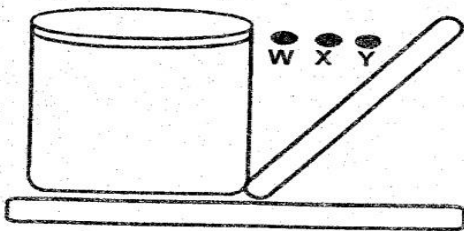
19. Which one of the following is not a source of electricity?
 A. Dynamo
 B. Batteries
 C. Windmill
 D. Torch

20. The diagram below represents the mammalian heart.



A pupil accidentally inhaled a poisonous gas. Which number represents the chamber that received poison first?

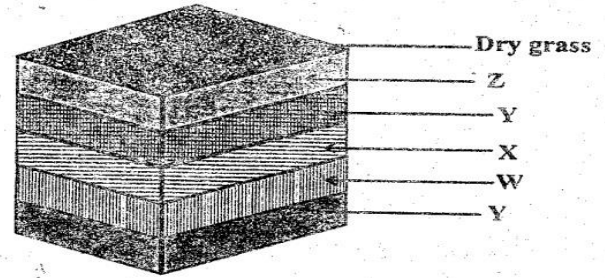
- A. 2
 B. 1
 C. 4
 D. 3
21. Which one of the following diseases is the vaccine administered many times?
 A. Poliomyelitis
 B. Measles
 C. Yellow fever
 D. Hepatitis B
22. A flexible metal rod was released from different points against a firm empty tin as shown



What was being investigated?

- A. If sound travels in all directions
 B. If sound produces vibration
 C. If objects produces sound through vibration
 D. Producing loud and soft sound

23. The diagram below shows a simple compound manure.

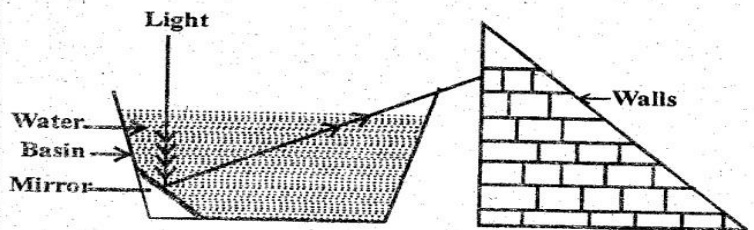


- What is the function of the layer marked Y?
 A. To make the compost moist
 B. For additional nutrients
 C. To provide food for bacteria
 D. To introduce decomposers

24. Which one of the following is not a controlled method of grazing?
 A. Tethering
 B. Zero grazing
 C. Herding
 D. Strip grazing

25. The most effective method of controlling tape worms and liver flukes is:-
 A. Dipping
 B. Tethering
 C. De worming
 D. Spraying

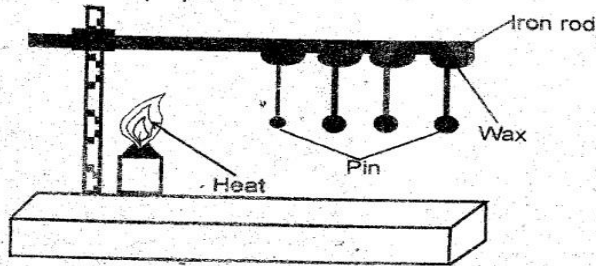
26. Std 6 pupils of Nabongo Primary carried out the experiment as shown below.



What were they trying to investigate?

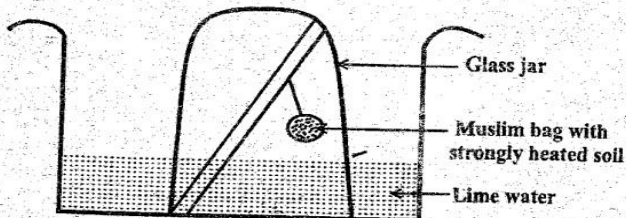
- A. Reflection of liquids
 B. Making a rainbow
 C. Dispersion of light
 D. Refraction of light
27. Weevils are most likely to attack all the following crops except:-
 A. Tomatoes
 B. Maize
 C. Bananas
 D. Sweet potatoes

28. The experiment shown below was carried out by a std 5 pupil.



What was he trying to investigate?

- A. Expansion in solids
 B. Good and poor conductors
 C. Convection of heat
 D. Conduction in solids
29. The following are magnetic materials **except**:-
 A. Ball bearing B. Paper clip
 C. Glass rod D. Razor blade
30. Which one of the following Nutrients is **not** needed when constructing a simple beam balance?
 A. Scales B. Tins
 C. A board of timber D. Thread
31. Std 4 pupils carried out an experiment on composition of soil as shown below

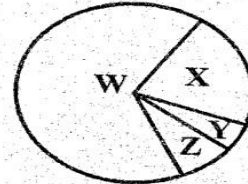


Which of the following explains why they did **not** make any observation?

- A. They used a lot of lime water
 B. They used dry soil
 C. They used muslin bag
 D. They used a big container
32. Which of the following is **not** a factor to consider when classifying clouds?
 A. Size B. Appearance
 C. Height D. Shape
33. Which of the following activities **does not** conserve soil?
 A. Proper use of farm chemicals
 B. Avoid destroying vegetation
 C. Ploughing across the contours
 D. Constructing gabions

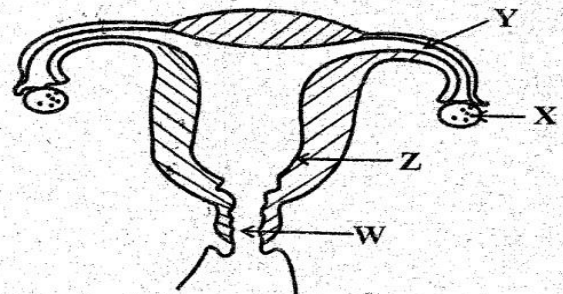
34. Which component of environment covers the largest part of earth's surface?
 A. Air B. Soil
 C. Plants D. Water

35. The following diagram shows a pie chart of components of air



Which letter represents the gas used by legumes to make proteins?

- A. W B. X
 C. Y D. Z
36. Which of the following parts of digestive system is **correctly** matched with its function?
- | Part | Function |
|-------------|-----------------------|
| A. Colon | Digests fats and oils |
| B. Stomach | Absorbs vitamins |
| C. Duodenum | Digests carbohydrates |
| D. Rectum | Absorption of food |
37. In which of the following stages is a person said to have HIV/AIDS?
 A. Window
 B. Full blown
 C. Symptomatic stage
 D. Asymptomatic stage
38. Which of the following water borne diseases is controlled by draining stagnant water?
 A. Malaria and cholera B. Typhoid
 C. Bilharzia D. Cholera
39. The diagram below shows a female reproductive system



Which of the following **correctly** shows processes W,X,Y and Z respectively?

- A. Parturition, ovulation, fertilization, implantation
- B. Implantation, parturition, ovulation, fertilization
- C. Fertilization, ovulation, implantation, parturition
- D. Parturition, ovulation, implantation, fertilization

40. A std 5 pupil in Mpeli Primary school was diagnosed with the following signs and symptoms

- Visible bones
- Wrinkled face

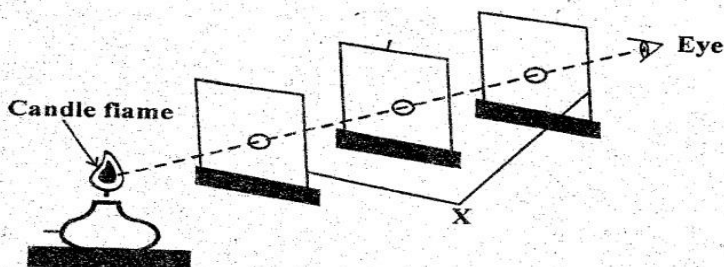
The child was also **likely** to have:-

- A. Thin brown hair
- B. Swollen hands
- C. Wastage of muscles
- D. Weak bones

41. The **main** reason why livestock are given concentrates is to:-

- A. Supplement other feeds
- B. Fight disease causing germs
- C. Reduce the cost of feeds
- D. Increase production

42. A std 6 pupil carried the experiment as shown below.



The material labelled **x** is **likely** to be:-

- A. Wood
- B. Window pane
- C. Frosted glass
- D. Skylight

43. Three of the following are reasons why we need to maintain simple tools **except** one. Which one?

- A. To increase the force that hinders movement
- B. To keep them in efficient condition
- C. To make them serve better the purpose for which they are meant for
- D. To make them durable

44. Which of the following shows how a charcoal cooler preserves food?

- A. By removing moisture from food
- B. By coating the food
- C. By cooling and evaporation
- D. By absorbing water

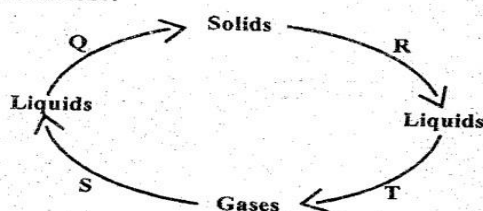
45. Which of the following is an adaptation of plants in dry areas?

- A. Broad leaves
- B. Thick
- C. Flexible stems
- D. No roots

46. Which of the following animals is **correctly** matched with its products?

Animal	Product
A. Cattle	Mutton
B. Poultry	Feathers
C. Sheep	Milk
D. Goat	Dairy

47. The diagram below shows changes of state in matter.



Which two letters represent absorption of heat?

- A. QR
- B. RT
- C. QS
- D. ST

48. Which of the following substances has definite mass but indefinite shape and volume?

- A. Smoke
- B. Sugar
- C. Dust
- D. Oil

49. Which of the following physical changes occur in girls only?

- A. Broadening of shoulders
- B. Increase in weight and height
- C. Pimples may appear
- D. Onset of menstruation

50. The following are some effects of drug abuse induced accidents

- (i) Addiction
- (ii) Coma
- (iii) Rape
- (iv) Truancy
- (v) Impaired judgement

Which three are classified as health effects?

- A. i, ii, v
- B. ii, iii, vi
- C. i, iii, iv
- D. iii, iv, v