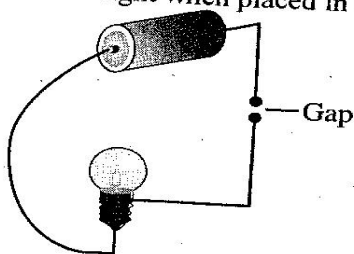


# **MAKUENI COUNTY**

- ▶ **MATHEMATICS**
- ▶ **ENGLISH LANGUAGE**
- ▶ **ENGLISH COMPOSITION**
- ▶ **KISWAHILI LUGHA**
- ▶ **KISWAHILI INSHA**
- ▶ **SCIENCE**
- ▶ **SOCIAL STUDIES/C.R.E**

# SCIENCE

- Growing of cover crops is important to a farmer because it
  - Increases bacteria in the soil
  - Makes the soil soft
  - Prevents loss of soil moisture
  - Adds nutrients to the soil
- The following are four stages of development of a baby during pregnancy. Which one is correctly arranged?
  - Egg → Zygote → Embryo → Foetus
  - Egg → Foetus → Embryo → Zygote
  - Foetus → Zygote → Embryo → Egg
  - Embryo → Foetus → Egg → Zygote
- The exchange of oxygen and food between the mother and the developing foetus takes place through a structure called
  - Amniotic fluid
  - Umbilical cord
  - Uterus
  - Placenta
- Which of the following characteristics enables cactus to survive in dry climate?
  - It has large leaves to catch rain.
  - It climbs on other plants.
  - It sheds leaves during dry season
  - It has small leaves and large succulent stems.
- Which of the following characteristics is not true about hydrophytes?
  - Have thick and waxy cuticles.
  - Broad leaves.
  - Many leaves.
  - Shallow root system.
- The figure below shows an open circuit. Which one of the following cannot be used to make the bulb light when placed in the gap.

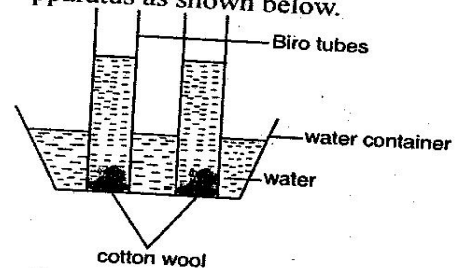


- Water
  - Graphite
  - Aluminium
  - Glass rod.
- Which of the following about both birds and reptiles is not true
    - They both lay eggs
    - They are both vertebrates
    - They are both warm blooded
    - Birds are warm -blooded and reptiles are cold blooded

- Which one of the following materials can be attracted by a magnet?
  - Steel spoon.
  - Copper coin.
  - Aluminium.
  - Brass rod.
- Below is a diagram showing the beak of a bird. The beak is adapted for



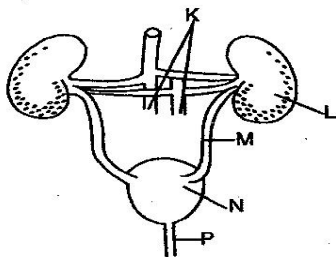
- flesh
  - nectar
  - grain
  - food in water
- Which of the following is not an advantage of organic manure?
    - They improve water holding capacity.
    - They contain weed seed.
    - Improve soil texture.
    - They are cheap.
  - Which of the following is not a sign of Anaemia?
    - Rapid heart beat.
    - Weak bones.
    - Pale and whitish tongue.
    - Frequent headache.
  - A group of pupils wanted to compare the rate at which water rises up the soil. They set up the apparatus as shown below.



- From the results obtained by the pupils the correct conclusion could not be made because
- The pupils placed both -tubes in the same basin
  - Used identical biro tubes
  - Used equal amount of soil in both biro tubes
  - Used the same type of soil
- Which of the following is an advantage of hardwater
    - wastes soap
    - forms fur on pans
    - helps in bone and teeth formation
    - forms scales in boilers

14. What is the function of haemoglobin in the blood?  
 A. Combine with oxygen.  
 B. Transport food substances.  
 C. Clot blood.  
 D. Fight germs.
15. Which of the following consists of a correct food chain?  
 A. Frogs → Grasshoppers → Grass → Snakes  
 B. Snakes → Frogs → Grasshoppers → Grass  
 C. Grass → Grasshoppers → Frogs → Snakes  
 D. Grass → Grasshoppers → Snakes → Frogs

Use the diagram below to answer questions 16 to 18.



16. Name the parts marked M, P, respectively.  
 A. ureter, urethra  
 B. spermduct, ureter  
 C. urethra, spermduct  
 D. urethra, ureter
17. What is the function of the part marked L  
 A. Removes excess urea and water in form of urine  
 B. Removes excess carbon dioxide and water vapour  
 C. Removes excess salts  
 D. Stores urine temporarily
18. Name the part marked N  
 A. Bladder  
 B. Kidney  
 C. Dermis  
 D. Artery
19. The following occurs during the process of birth  
 (i) *Dilation of cervix*  
 (ii) *Amniotic fluid flows out*  
 (iii) *After birth comes out*  
 (iv) *Contraction of the uterus wall*  
 (v) *Breaking of the amniotic sac*  
 Arrange them starting with the first to occur up to the last  
 A. (i), (ii), (iii), (iv), (v)  
 B. (v), (iii), (iv), (ii), (i)  
 C. (iv), (i), (v), (ii), (iii)  
 D. (iv), (i), (ii), (v), (iii)
20. Which of the following type of organic fertilizer is made from animal wastes e.g. cow dung and animal beddings?  
 A. Farmyard.  
 B. Green manure.  
 C. Organic manure mulches.  
 D. Compost manure.

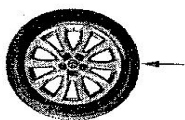
21. A pupil mixed two different liquids at a time. Which ones were immiscible  
 A. Water and ink.  
 B. Oil and Kerosene.  
 C. Water and Spirit.  
 D. Cooking oil and Milk.
22. Which other examples of levers are in the same group as the one shown below



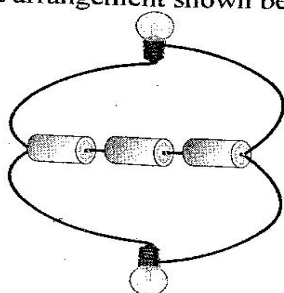
- A. Nut cracker  
 B. Lid opener  
 C. Charcoal tongs  
 D. Spade.
23. The following are disadvantages of hard water except  
 A. Makes plastic to have spots  
 B. Reacts with water pipes forming fur  
 C. Forms scale with hot water pipes  
 D. Needed for strong teeth and bones.
24. Which of the following is not a sign of unhealthy animal?  
 A. Have stunted growth.  
 B. Gains weight.  
 C. Have rough coat.  
 D. Passes out faeces and urine with blood.
25. Which of the following statements explains why a rain gauge is placed 15cm underground.  
 A. Prevent splashing of water into the funnel  
 B. Collect as much water as possible  
 C. Prevents evaporation of collected water  
 D. To measure the amount of rainfall in mm.
26. The following are characteristics of an insect pollinated flower. Which one is not  
 A. flowers are large in size  
 B. anthers are firmly attached  
 C. flowers produce large amounts of powdery pollen grains  
 D. flowers have scent
27. Which of the following is the main function of red blood cells?  
 A. Transports oxygen to tissues and organs of the body  
 B. Transports haemoglobin  
 C. Brings about blood clotting during bleeding  
 D. Destroy disease causing organisms



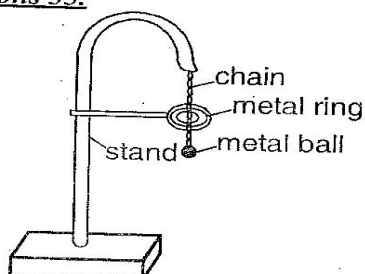
28. The part of the tyre shown below enables it to



- A. Increase speed of the vehicle
  - B. Have a grip on the road
  - C. Reduce force of the vehicle
  - D. Reduce friction
29. Three of the following are functions of the skin. Which one is not?
- A. Manufacture of vitamin.
  - B. Removal of waste products
  - C. Respiration.
  - D. Control of body temperature.
30. Which of the following statements is true about the circuit arrangement shown below?

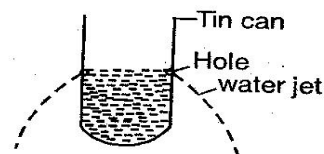


- A. Cells are arranged in parallel
  - B. Bulbs give out different amount of light
  - C. Bulbs are arranged in parallel
  - D. Only one bulb lights.
31. How do bacteria in the soil help to improve soil fertility?
- A. They kill off pests
  - B. They help to decompose plant and animal remains
  - C. They increase the oxygen supply
  - D. They cause diseases in weeds and do kill them
32. Which of the following parts is correctly matched with its function?
- A. Amniotic fluid - Acts as a shock absorber
  - B. Umbilical cord - facilitate food transfer
  - C. Placenta - carry food and oxygen
  - D. Amnion - prevent the foetus from diseases
33. Study the set up below and use it to answer questions 33.



When cooled the metal ball will pass through the ring. When heated the metal ball did not pass through the ring. What would happen when the ball and the ring were heated at the same time under same temperature?

- A. The ball will pass through the ring
  - B. The ball will not pass through the ring easily
  - C. There could be a change
  - D. The ball squeezes through the ring.
34. The following are characteristics which are similar to both birds and fish
- (i) *They lay eggs*
  - (ii) *They fertilise their eggs externally*
  - (iii) *They have scales*
  - (iv) *They are cold blooded*
- Which of the above characteristics are not true
- A. (ii), (iii)
  - B. (i), (iii)
  - C. (i), (iii)
  - D. (ii), (iv)
35. Hydrophytes have their leaves with a waxy or hairy upper surface as one of their adaptations. This is to
- A. enable them float in water
  - B. Ensure that they are not broken
  - C. Prevents any water from standing on the leaf
  - D. Help the stomata to remain closed
36. Which one of the following is common to all sexually transmitted infections?
- A. They are all caused by bacterium
  - B. They are all viral
  - C. They are mainly transmitted through sexual contact
  - D. All the STI's have a cure
37. A pupil investigating a certain aspect of pressure in a liquid used a set up shown in the diagram below



What conclusion could the pupil make from the investigation

- A. Air exerts pressure on the surface of a liquid
  - B. Pressure in a liquid increases with depth
  - C. Pressure in a liquid is equal at the same depth
  - D. Pressure in a liquid is exerted on the sides only
38. Which one of the following is the last step when separating a mixture of sand and salt?
- A. Dissolving.
  - B. Filtering.
  - C. Evaporation.
  - D. Decanting.

39. The following activities are carried out when making a beam balance but not in the correct order

(i) *suspend the arm to find balance point and mark*

(ii) *make a base, a stand and the arm*

(iii) *fix the stand and the arm to the base*

(iv) *suspend tins on both sides of the arm*

Which one of the following is the correct order in which the activities are carried out

- A. (iii), (i), (ii), (iv)      B. (ii), (i), (iii), (iv)  
C. (iii), (ii), (i), (iv)      D. (ii), (i), (iv), (iii)

40. Which one of the following statements about magnetism is incorrect

- A. unlike poles of a magnet attract  
B. magnetism can pass through a non-magnetic material  
C. a magnet can be used to separate magnetic and non magnetic materials  
D. a magnet can be used to separate two magnetic materials

41. Which one of the following statements about blood vessels is true on both the venacava and pulmonary artery

- A. They are both arteries  
B. Both have valves  
C. They are both veins  
D. Both carry blood rich in oxygen

42. The following statements are true about the amniotic fluid except

- A. It transports oxygen to the embryo  
B. It enables the embryo to move about freely  
C. Prevents the foetus from drying up  
D. It acts a shock absorber protecting the embryo against injury

43. Which one of the following statements is correct according to Immunization schedule for infants?

- A. The first dose of polio is given at 6 weeks  
B. DPT vaccine is given at Birth and at 10 weeks  
C. DPT and Measles vaccines are given at 14 weeks  
D. Polio and BCG vaccines are given at birth

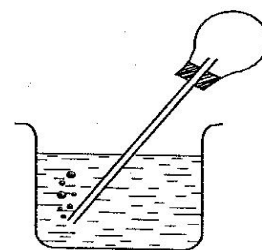
44. The component that makes up 0.97% of air is used in

- A. Rusting  
B. Preservation of soft drinks  
C. Electric bulbs  
D. Making proteins

45. Which one of the following pairs of processes is as a result of increase in temperature

- A. Melting and Evaporation  
B. Condensation and Freezing  
C. Condensation and Evaporation  
D. Melting and Freezing

46. When the hand is placed against the flask in the figure shown below, bubbles of air emerge from the tube. This is because:-



- A. of the atmospheric pressure  
B. water rises in the tube and pushes air out  
C. heat from the hand causes the air in the flask to expand  
D. The flask is squeezed

47. It is more difficult to obtain a lather with hard water than with soft water because

- A. hard water is too hard  
B. hard water contains certain dissolved salts  
C. soap dissolves in hard water  
D. hard water is not really water

48. Which is the most effective way to control malaria?

- A. Kill all adult people  
B. Kill adult mosquitoes on sight  
C. Avoid mixing with patients suffering from malaria  
D. Drain all stagnant water

49. Which of the following practices will not help in preventing the spreading of HIV/AIDs

- A. Screening blood before transfusion  
B. Encouraging Traditional circumcision  
C. Abstaining from sex  
D. Avoid sharing of cutting objects

50. Which one of the following consists of a list of storage pests only?

- A. Rodents, weevils ,cutworms  
B. Rats, Weevils, White Ants  
C. Aphids, Cutworms, Weevils  
D. Weevils , rats, Aphids