

---

# COUNTY MOCK EXAMS-STD 8 2016

## SCIENCE PAPER

Coordinated by KENPRO,  
Macjo Arcade, 4th Floor, Suite 15E,  
Off Magadi Road, Ongata Rongai |Tel: +254202319748 |  
E-mail:infosnkenya@gmail.com | Website:[www.schoolsnetkenya.com](http://www.schoolsnetkenya.com)

**BARINGO COUNTY**  
**KOIBATEK MOCK EXAMS**  
**STANDARD. 8 - 2016**  
**SCIENCE**

Time: 1 hr 40 mins

READ THESE INSTRUCTIONS CAREFULLY

1. You have been given this question booklet and a separate answer sheet. The question booklet contains 50 questions.
2. Do any necessary rough work in this booklet.
3. When you have chosen your answer, mark it on the **ANSWER SHEET**, not in this question booklet.

**HOW TO USE THE ANSWER SHEET**

4. Use only an ordinary pencil.
  5. Make sure that you have written on the answer sheet.
- YOUR INDEX NUMBER**  
**YOUR NAME**  
**NAME OF YOUR SCHOOL**
6. By drawing a line on the correct numbered ellipses (small oval shapes) mark your full Index Number (i.e School Code Number and three-figure Candidate's Number) in the grid near the top of the answer sheet.
  7. Do not make any marks outside the ellipses.
  8. Keep the sheet as clean as possible and do not fold it.
  9. For each of the questions 1 - 50 four answers are given. The answers are lettered **A, B, C, D**. In each case only **ONE** of the four answers is correct. Choose the correct answer.
  10. On the answer sheet show the correct answer by drawing a line on the ellipse in which the letter you have chosen is written.

**Example**

3. Bile juice is produced in the
- A. gall bladder
  - B. liver
  - C. urinary bladder
  - D. bile duct

The correct answer is D (Bile duct)  
On the answer sheet:

1. (A) (B) (C) (D)      2. (A) (B) (C) (D)      3. (A) (B) (C) (D)      4. (A) (B) (C) (D)

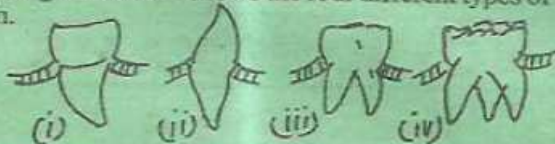
In the first set, a line is drawn within the letter D

11. Your dark line **MUST** be within the letter.
12. For each question, **ONLY ONE** ellipse is to be drawn a line in each set of four ellipses.

**TURN OVER**



1. The diagrams below shows the four different types of teeth.



Which combination shows the type of teeth that are used for chewing and biting food respectively?

- A. (iv) and (i)      B. (ii) and (iii)  
 C. (ii) and (iv)      D. (iii) and (iv)
2. Which of the following statements is **INCORRECT** when plant materials such as plant leaves and dry grass are used as soil cover?
- A. They prevent unwanted plants from growing  
 B. They add organic matter to the soil  
 C. They conserve soil moisture  
 D. They add inorganic matter to the soil
3. Which one of the following gases is used by plants to produced energy and water?
- A. Carbon dioxide      B. Nitrogen  
 C. Oxygen      D. Rare gases
4. The **MAIN** reason why water tanks are made of plastic material is \_\_\_\_\_
- A. plastic materials do not rust  
 B. to make the tank durable  
 C. to absorb more heat from the sun  
 D. prevent water from being heated by the sun
5. Pupils of Lureko primary were asked by their science teacher to list ways of using medicine properly
- (i) All medicines should be well labeled before storing them  
 (ii) One should never take medicine unless one is sick  
 (iii) All medicines should be kept in the medicine kit  
 (iv) Do not expect to be given medicine every time you go to hospital
- Which combination was correct?  
 A. i and iii    B. i and ii    C. ii and iv    D. ii and iii
6. The structure below shows the mammalian heart. Use it to answer the question that follows.



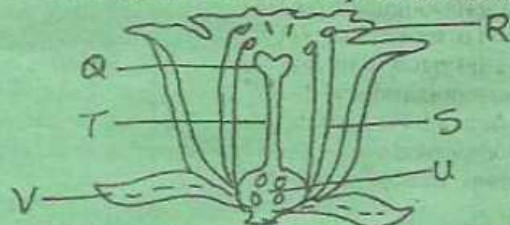
Which of the statements below is **INCORRECT** about the structure?

- A. N has thicker walls than M  
 B. L receives blood that is bright red in colour  
 C. W carries blood from the lungs  
 D. X has thick elastic walls
7. The **BEST** method of separating a mixture of wheat flour and husks is \_\_\_\_\_
- A. winnowing      B. picking  
 C. filtering      D. sieving
8. The **BEST** way of controlling waterborne disease with the following signs and symptoms is?

- (i) fever  
 (ii) coughing  
 (iii) blood stains in urine and stool  
 (iv) skin rash

- A. Wearing gumboots when walking in stagnant water  
 B. Drink water that has been boiled  
 C. Thoroughly washing foods eaten raw  
 D. Washing hands after visiting the toilet
9. Which one of the following groups of machines consists of **LEVERS** only?
- A. Staircase, spade and crowbar  
 B. Ladder, staircase and spade  
 C. Spade, wheelbarrow and ladder  
 D. Crowbar, spade and claw hammer
10. Which statement below is **NOT** correct about storage of food?
- A. Foods that go bad easily such as milk, fish and cooked foods should be kept covered in a refrigerator  
 B. All stored food should be kept in containers covered with loosely fitting lids  
 C. Dried foods such as flour and grains should be kept in containers with tight fitting lids  
 D. Salt, pepper and tea leaves should be placed on a shelf in the kitchen where they can be reached easily
11. Which one of the following comprises of plants with feathery like roots?
- A. Acacia, Euphorbia and sisal  
 B. Acacia, maize and water lily  
 C. Water lily, duck weed and water hyacinth  
 D. Sisal, duck weed and water lily

12. The diagram below shows parts of a flower.



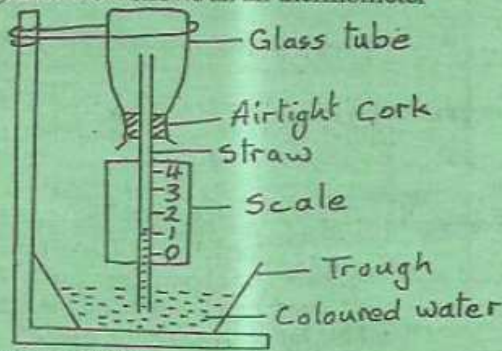
Which part is correctly matched with its function?

Part	Function
A. Q	Receives anthers during prollination
B. T	Holds the anthers
C. U	protects the flower in bud stage
D. R	Produces male sex cells

13. Which one of the following pairs of animals lay a prawn of eggs in water?
- A. Fish and snake      B. Toad and newt  
 C. Duck and crocodile    D. Penguin and flamingo
14. The following statements were given by pupils of Moon Academy during a science lesson on Electricity. Who among them gave a wrong statement?
- A. Washiali - solar panels convert heat energy from the sun to electricity  
 B. Wesa - geothermal generators use hot gases from under the ground to produce electricity  
 C. Busolo - a bicycle dynamo is a small generator  
 D. Munira - solar panels convert light energy from the sun to electricity



15. The diagram below shows an air thermometer

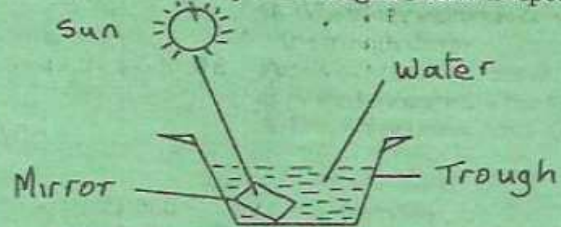


It is correct to say that

- A. It works on the principle of expansion and contraction of liquids
  - B. When temperatures are high the level of the liquid in the straw rises
  - C. The scale is read from the top to bottom
  - D. When temperatures are high the level of the liquid in the trough drops
16. Pupils of Mumias Central observed rain water that appeared coloured. This was due to \_\_\_\_\_
- A. Excessive use of farm chemicals
  - B. Oil spoilage
  - C. Soot and dust
  - D. Soil particles
17. When a lighter boy balances a heavier boy, the heavier one sits \_\_\_\_\_
- A. farther away from the pivot
  - B. same distance with a lighter boy
  - C. nearer the pivot
  - D. directly on the pivot
18. Which one of the following is FALSE about water in the diet? Water \_\_\_\_\_
- A. keeps body clean and healthy
  - B. cools the body when the weather is cold
  - C. transport food to the body organ
  - D. keeps the skin moist
19. A child was diagnosed with the following signs and symptoms:
- |                   |                     |
|-------------------|---------------------|
| (i) Wrinkled face | (ii) Appears weak   |
| (iii) Cries a lot | (iv) Sharp appetite |
- The above disease can best be controlled by \_\_\_\_\_
- A. eating a diet rich in proteins
  - B. eating a diet rich in mineral salts and vitamins
  - C. eating a well balanced diet
  - D. eating a diet rich in fibres and iron
20. Which one of the following best explains why xerophytes plants have leaves covered with normal hairs?
- A. To reduce the amount of water loss
  - B. To reflect sunlight and heat reaching the leaves
  - C. To trap water vapour from the air
  - D. To enable the plant less exposed to sun and wind
21. Three of the following statements are true about adaptations in mammal except \_\_\_\_\_
- A. in herbivores, the premolars and molars are only present in the upper jaw
  - B. carnassials teeth in a carnivore are used for slicing flesh

- C. the canines in a carnivore are long and pointed
- D. diastema helps to chew the vegetable materials in the mouth

22. The MAIN reason why concentrates are added to the commercial feeds during production is \_\_\_\_\_
- A. to help in digestion
  - B. to increase production
  - C. to make the feeds more nutritious
  - D. to preserve the feeds
23. Which one of the following statement is NOT true about composition of air?
- A. The gases that make up air are not present in equal amounts
  - B. Air is made of tiny particles
  - C. Water vapour and tiny solid particles are carried in air
  - D. The amount of water vapour carried in the air varies
24. The experiment below was carried out by pupils of Matawa Primary to investigate a certain aspect of light



Which aspect of light was being investigated?

- A. Reflection of light
  - B. Refraction of light
  - C. Making a rain bow
  - D. How light travels
25. Below are steps followed when investigating the transfer of heat in liquids but not in the correct order.
- (i) remove the straw slowly and carefully
  - (ii) dip one end of straw in ink
  - (iii) place the jar on a stand over a source of heat
  - (iv) put some water in a glass jar
  - (v) without removing finger, let the end of the straw touch the bottom of the jar
- Which one of the following is the CORRECT order of steps?
- |                      |                      |
|----------------------|----------------------|
| A. ii, iv, i, iii, v | B. iv, ii, v, i, iii |
| C. iv, iii, i, v, ii | D. ii, i, iii, iv, v |
26. Which one of the following heavenly objects does not twinkle and is nearest to the earth?
- A. Moon
  - B. Mars
  - C. Venus
  - D. Mercury
27. Which one of the following statements is correct about people infected with HIV/AIDS?
- A. Should be given large amounts of food but at regular interval
  - B. They should avoid taking part in daily activities
  - C. They should be given a lot of fluids
  - D. They require irregular medical attention
28. Which one of the following parts of the reproductive system is CORRECTLY matched with its functions?
- A. Sperm duct - allows urine to the urethra
  - B. Oviduct - allows implantation to take place
  - C. Uterus - allows fusion to occur
  - D. Urethra - used to pass out liquid waste from the body



29. Which one of the following statements is TRUE about the digestive system?
- Most absorption of food takes place in the upper part of small intestine
  - Digestion of food ends in the rectum
  - The liver and pancreas are involved directly in the digestion of food
  - Most of the mineral salts are absorbed in the colon
30. Texture, drainage and capillarity of soils depends \_\_\_\_\_
- Humus in the soils
  - Air in the soils
  - Size of the soil particles
  - Water in the soils
31. Which one of the following statements is CORRECT about the environment?
- The environment consists of only living things
  - The environment is the home of a living thing
  - The environment consists of only non-living things
  - The environment consists of both living and non-living things
32. Why is it important for farmers to keep bees in their orchards? The bees \_\_\_\_\_
- Provide security in the farm
  - Help in cross pollination
  - Make the fruits sweet by injecting honey
  - Kill other harmful insects
33. Which one of the following internal livestock parasite mainly attack sheep and goats?
- Hookworm
  - Lungworms
  - Tapeworms
  - Roundworms
34. In which of the following are the characteristics of solids and liquids correctly matched?
- | Solids             | Liquids             |
|--------------------|---------------------|
| A. Definite size   | → Definite shape    |
| B. Definite mass   | → Definite shape    |
| C. Definite volume | → No definite shape |
| D. Definite volume | → No definite size  |
35. The following are uses of wind EXCEPT
- winning
  - felling trees
  - sailing canoes
  - windmills
36. Which one of the following is NOT a problem of using hard water in laundry work?
- A lot of soap is needed to form lather
  - Whitish particles may be deposited on coloured clothe
  - Wastage of energy and time when washing
  - Blockage of pipes transporting hard water
37. Which one of the following describes the use of water in recreation?
- Drinking
  - Cooking
  - Surfing
  - Fountain
38. When the force of gravity on an object is measured using a spring balance we say we are measuring \_\_\_\_\_
- Friction
  - Pressure
  - Gravity
  - Weight
39. The main reason why tools such as kitchen knife do not rust is because? They are \_\_\_\_\_
- dried and coated with oil
  - made of stainless steel
  - oiled regularly
  - cleaned immediately after use
40. Which one of the following devices can store current electricity in form of chemical energy?
- Bicycle dynamo
  - Solar cells
  - Wind generators
  - Motorcar batteries
41. Std. four pupils with their science teacher took garden soil and placed it in a bottle containing lime water then covered it tightly. What were they investigating?
- Soil contains living organism
  - Soil contains water
  - Soils contains organic matter
  - Soil contains mineral salts
42. The chart below represents a simple classification of flowering plants.
- ```

graph TD
    FP[Flowering plants] --> TR[Tap roots]
    FP --> FR[Fibrous roots]
    TR --> M[Mango]
    TR --> C[Coconut]
    FR --> A[Acacia]
    FR --> O[Onion]
  
```
- Which one of the following pairs of plants are wrongly classified?
- Mango and onion
  - Coconut and onion
  - Acacia and mango
  - Coconut and acacia
43. Which one of the following immunisable diseases is the vaccine given only when there is an outbreak and it gives protection for only a few days?
- Typhoid
  - Yellow fever
  - Polio
  - Cholera
44. During a science lesson, the teacher explained to 'he learners the preventive measures against sexually transmitted infections. He insisted on the ABC for youth against the spread of STI's. Which one of the following is the meaning of letter 'B' in the initial?
- Being faithful
  - Behaving morally upright
  - Becoming strong against STI's
  - Becoming informed is the best weapon
45. Which one of the following waste products is given out when protein food is broken down?
- Uric acid
  - Sweat
  - Urea
  - Lactic acid
46. The following are steps followed when investigating whether soil contains water but not in their correct order.
- Observe the inside of the lid
  - Heat the tin for a bout 10 minutes
  - Put some soil in a tin and cover it with a lid
  - Use a pair of tongs to hold the lid
  - Lift the lid
- The correct order of steps to be followed is \_\_\_\_\_
- iii, ii, v, iv, i
  - ii, iii, v, iv, i
  - v, iv, iii, ii, i
  - iii, ii, iv, v, i
47. Which one of the following pairs of components of the environment do all plants depend on directly?
- Air and heat
  - Soil and air
  - Mineral salt and water
  - Soil and animals
48. Which one of the following is NOT a source of light?
- Electricity
  - Sun
  - Moon
  - Glow worm
49. Substances that are contained in foods and keep us in good health are called \_\_\_\_\_
- nutrients
  - balanced diet
  - food group
  - medicines
50. Which of the following crop pest make holes in growing points of crops such as sisal and on the stem of cashew nut?
- Aphid
  - Termites
  - Salkborers
  - Weevils