

### 3.15.2 Agriculture Paper 2 (443/2)

#### SECTION A (30 marks)

*Answer ALL the questions in this section in the spaces provided.*

- 1 State **four** ways of controlling lice in poultry. (2 marks)
- 2 State **three** signs of heat observed in rabbits. ( $1\frac{1}{2}$  marks)
- 3 Name **three** methods of extracting honey from combs. ( $1\frac{1}{5}$  marks)
- 4 State **three** signs of broodiness in a hen. ( $1\frac{1}{2}$  marks)
- 5 Give the **main** reason for each of the following in dairy farming: ( $1\frac{1}{2}$  marks)
  - (a) milking quickly and evenly;
  - (b) milking at regular times;
  - (c) complete milking.
- 6 State **four** factors that stimulate milk let-down in a lactating cow. (2 marks)
- 7 State **four** signs of infestation by external parasites in goats. (2 marks)
- 8 Give **four** disadvantages of inbreeding in livestock production. (2 marks)
- 9 State **four** advantages of fish farming in Kenya. (2 marks)
- 10 Give **two** reasons for castration in piglets. (1 mark)
- 11 Name **two** practices that are carried out on eggs in preparation for marketing. (1 mark)
- 12 State **two** precautions that should be observed when shearing sheep to ensure production of high quality wool. (1 mark)
- 13 Name **four** parts of a farm building that can be reinforced using concrete. (2 marks)
- 14 State **four** factors that can affect digestibility of a feedstuff in livestock. (2 marks)
- 15 State **two** causes of soft shelled eggs. (1 mark)
- 16 Give **four** characteristics of a good site for a fish pond. (2 marks)
- 17 State **four** disadvantages of fold system in poultry rearing. (2 marks)
- 18 Name **four** methods of docking in sheep rearing. (2 marks)

**SECTION B** (20 marks)

*Answer ALL the questions in this section in the spaces provided.*

- 19 Below are photographs showing parts of a ruminant stomach. Study them and answer the questions that follow.



**A**



**C**



**B**



**D**

- (a) Identify the parts labelled **A** and **B** (2 marks)

**A** .....

**B** .....

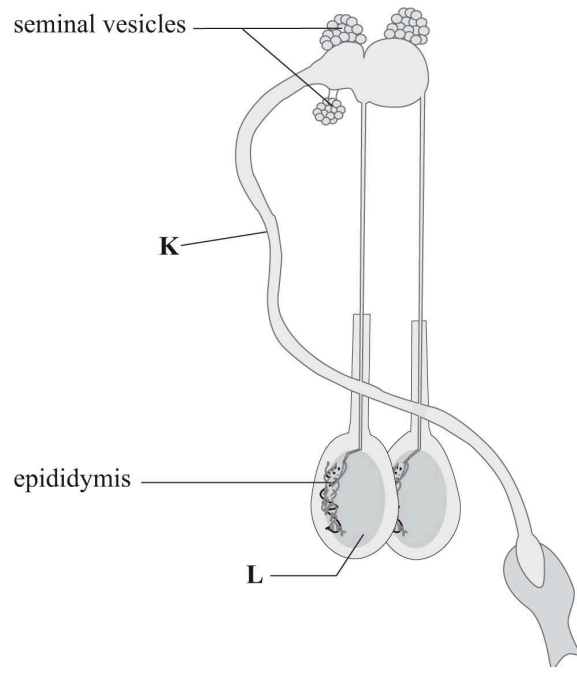
- (b) State **one** function of the part labelled

**A** ..... (1 mark)

**C** ..... (1 mark)

- (c) Name **one** enzyme that is produced in the part labelled **D**. (1 mark)

- 20 Below is a diagram illustrating the reproductive system of a bull. Study it and answer the questions that follow.



- (a) Identify the parts labelled

**K**..... (1 mark)

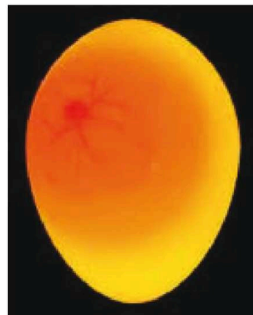
**L**..... (1 mark)

- (b) State the function of the part labelled

Epididymis ..... (1 mark)

Seminal vesicles ..... (1 mark)

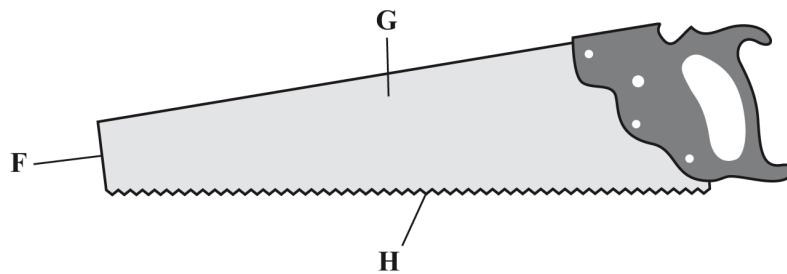
- 21 Below is a photograph showing an egg being candled. Study it and answer the questions that follow.



- (a) Why is candling important in poultry farming? (1 mark)

- (b) What changes will be observed on the same egg if it was candled on the 18th day of incubation? (2 marks)

22 The following is an illustration of a handsaw. Study it carefully and answer the questions that follow.



- (a) Name the parts labelled

F ..... (1 mark)

G ..... (1 mark)

- (b) Explain **three** maintenance practices that should be carried out on the part labelled H. (3 marks)

23 Below is a diagram illustrating a farm implement. Study it and answer the questions that follow.



- (a) Identify the implement illustrated above. (1 mark)

(b) State the use of the:

(i) implement on the farm; (1 mark)

(ii) part of the implement labelled J. (1 mark)

**SECTION C (40 marks)**

*Answer any **TWO** questions from this section in the spaces provided after question 26.*

- 24** (a) Give **five** reasons for keeping livestock healthy. (5 marks)
- (b) Describe the symptoms of roundworm infestation in livestock. (7 marks)
- (c) Describe the control measures for cannibalism in layers. (8 marks)
- 25** (a) Describe the body conformation features of a dairy heifer. (5 marks)
- (b) State the disadvantages of using live fences on a farm. (7 marks)
- (c) Describe how a four-stroke cycle petrol engine works. (8 marks)
- 26** (a) Describe the disease control routine management practices in calf rearing. (7 marks)
- (b) Describe contagious abortion (Brucellosis) disease under the following sub-headings:
- (i) causal organism; (1 mark)
- (ii) animals affected; (2 marks)
- (iii) symptoms; (4 marks)
- (iv) control measures. (6 marks)